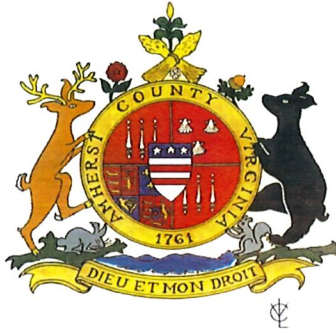


Board of Supervisors

Claudia D. Tucker, Chair
District 2
L. J. Ayers III, Vice-Chair
District 3
David W. Pugh, Jr., Supervisor
District 4
Kenneth M. Campbell, Supervisor
District 1
Jennifer R. Moore, Supervisor
District 5



County Administrator
Dean C. Rodgers

County Attorney
Michael W. S. Lockaby

AMHERST COUNTY BOARD OF SUPERVISORS

MINUTES

AGENDA

October 2, 2018
Administration Building - 153 Washington Street - Public Meeting Room
Amherst, Virginia 24521
Town Hall Meeting Convened - 7:00 p.m.

- I. Call to Order**
- II. Discussion of Options**
 - A. Landfill Construction
- III. Adjournment**

MINUTES

At a Special Meeting of the Amherst County Board of Supervisors and held at the Amherst County Administration building, Amherst, Virginia, thereof on Tuesday, the 2nd day of October, 2018, at 7:00 p.m., the following members were present:

BOARD OF SUPERVISORS:

PRESENT: Claudia D. Tucker, Chair
L. J. Ayers, III, Vice-Chair
David W. Pugh, Jr., Supervisor
Kenneth M. Campbell, Supervisor
Jennifer R. Moore, Supervisor

ABSENT: None

STAFF PRESENT: County Administrator Dean C. Rodgers
Deputy County Administrator David R. Proffitt
County Attorney Michael W. S. Lockaby
EA Clerk to Boards Regina M. Rice

OTHERS PRESENT: Lynn Klappich, CSI, CCCA, Draper Aden & Associates

I. Call to Order

Chair Tucker called the meeting to order at 7:00 p.m.

Chair Tucker led the Invocation.

Chair Tucker outlined the conduct of the meeting and departure from the Board's Rules of Procedure. She stated this meeting would be to gather information on the matter of the County's landfill, and she encouraged public comments and questions.

II. Discussion of Options

A. Landfill Construction

County Administrator Rodgers provided an introduction regarding action to be taken by the Board regarding landfill construction. He said that Ms. Lynn Klappich of Draper Aden had presented previous information to the Board on June 5, 2018 and September 4, 2018. At that time, the Board deferred any action on the matter and scheduled a Town Hall meeting on October 2, 2018 to receive public comment.

Mr. Rodgers introduced Ms. Lynn Klappich of Draper Aden.

Ms. Klappich presented a Power Point, explaining that was a compilation of information, which was provided to the Board at the June 5 and September 4, 2018 meetings. (See Attachment 1)

Ms. Klappich provided information on the current status of the landfill operations, key assumptions and critical elements, a description of the options and summary.

Chair Tucker opened the meeting to public comment.

The following citizens provided comments:

Mr. John A. Marks, Jr. of Madison Heights, Virginia provided his comments:

He stated he did not see a rush to close the landfill and believed it has been a cost saver to the County for debris collected from derelict structures, the derecho and the tornado. He remarked on hauling costs and the increased traffic in residential neighborhood. He asked if there was another option to consider, and said he was not against closing the landfill.

Mr. Grant Massie of Lowesville, Virginia provided his comment:

He said he was familiar with the landfill and the transfer system in Nelson County. He commented that efficiency is lost once the trash leaves the convenience center and is trucked to a transfer station.

Mr. Ed Kinnier of Amherst, Virginia provided his comment:

He asked about the possibility of repurposing the 280 acres if the landfill was closed, and if a disaster occurred in the County, could the landfill be reopened once it was closed to accept large amounts of debris. He said he believed the County would benefit by closing the landfill and going with a transfer station.

Mr. Alan Wood of Madison Heights, Virginia provide his comment:

BOOK 36

MINUTES – October 2, 2018

P a g e | 596

He said it would be appropriate to explore all options and believed the Board did not have enough information to make a decision. He was concerned about the cost to the citizens of Amherst County, and said there was no basis to make a final decision until the Board receives complete information on costs and an analysis of the options.

Mr. Rodney Taylor of Amherst, Virginia provide his comment:

He said that thirteen years ago the County decided not to join Region 2000 Service Authority. Because of that decision not to join the Region 2000 Service Authority, the citizens of Amherst County have spent 2.6 million. He said that Ms. Klappich is the expert on waste management in the Commonwealth, further stated the County does not want the liability of a landfill. He strongly encouraged the Board to take the advice of the experts and get out of the landfill business.

Mr. Don Kidd of Monroe, Virginia provided his comment:

He was concerned about the residents who live on Kentmore Farm Road with increased tractor trailer traffic. He said the roads are not wide enough to handle that type of truck traffic and was concerned about public safety. He encouraged the Board to look at the transfer site going in Appomattox County and to wait 40-60 days before making a decision.

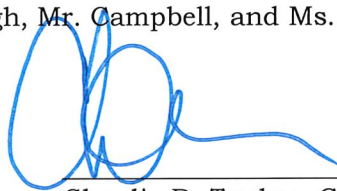
Vice-Chair Ayers requested that more research be done with regard to the potential Appomattox County facility.

In conclusion, Chair Tucker directed staff to gather more information for the Board to make a decision regarding the landfill issue.

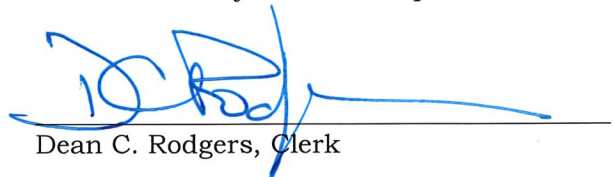
III. Adjournment

By motion of Chair Tucker and with the following vote, the Board adjourned at 9:01p.m.

AYE:	Mrs. Tucker, Mr. Ayers, Mr. Pugh, Mr. Campbell, and Ms. Moore
NAY:	None
ABSENT	None



Claudia D. Tucker, Chair
Amherst County Board of Supervisors



Dean C. Rodgers, Clerk



Presented by:
Lynn Klappich, CSI, CCCA
October 2, 2018



Draper Aden Associates
Engineering • Surveying • Environmental Services



Draper Aden Associates
Engineering • Surveying • Environmental Services

Amherst County Solid Waste Program

Disposal Option Evaluation

October 2, 2018



Agenda

Introduction

Current status landfill operations

Key Assumptions and Critical Elements

Description of options

Summary



Draper Aden Associates
Engineering • Surveying • Environmental Services

Current Status Landfill Operations



Draper Aden Associates
Engineering • Surveying • Environmental Services

Landfill Facts and Figures

- Total facility acreage: 280 acres
- Landfill disposal acreage: 34 acres
- Total life of landfill: 45 – 50 years
- Remaining life Cell 1: 5 years
- Estimated life Cell 2: 14 years
- Cost for construction liner system: \$450,000/acre
- Cost for construction cap system: \$170,000/acre



Draper Aden Associates
Engineering • Surveying • Environmental Services

Key Considerations

- Need to construct Cell 2 in near future
- Financing has been obtained for construction
- County assumed full operation of landfill in 2016
- Additional personnel and equipment added to operations in FY 2018 and FY 2019
- VDEQ permit compliance has been a challenge.
- Post Closure Care liability = 30 years



Goals of County's Solid Waste Program

- Reduce Costs
- Reduce liability
- Increase flexibility

Opportunity to consider options before commit to long term development of landfill.



Draper Aden Associates
Engineering • Surveying • Environmental Services

Overview of Findings

ITEM	TOTAL ESTIMATED COST FY 2019 – FY 2037	COST OF SERVICE (\$/TON)
Option 1 – Landfill Operations	\$45,199,300	\$97
Option 3 – Transfer to Region	\$44,111,100	\$94
Option 3 – Transfer to WMX	\$40,563,700	\$87

A difference in \$10/ton over the length of the planning period represents an annual savings of about \$246,000 per year.



Draper Aden Associates
Engineering • Surveying • Environmental Services

Key Assumptions

- Total cost of service evaluation
- Planning period FY 2019 – FY 2037 (End of Cell 2)
- Collections, recycling and old landfill not included.
- Average tonnage 24,600 tons per year – no growth
- Inflation at 2% unless otherwise noted



Loan

County has loan with BB&T for \$3,979,610.

- What is the best use of the loan?
- Originally established for construction of Cell 2.
- Could be re-assigned for other solid waste related activities:
 - Transfer station
 - Closure of Cell 1
 - Borrow area stabilization



Draper Aden Associates
Engineering • Surveying • Environmental Services

Reserve Fund

County has an unrestricted reserve fund of \$4,400,000 for solid waste program.

- What is the best use of this fund?
- Landfill option – reserve fund assigned to pre-fund closure and post closure care reserve.
- Transfer option – reserve fund assigned to pre-fund post closure care for Cell 1 and to purchase equipment.



VDEQ Compliance

County has received 1 NOV and 3 warning letters from VDEQ over past 2 years.

- Issues have included:
 - Size of working face
 - Sufficient stockpiles of soil
 - Daily and intermediate cover
 - Configuration of landfill surface
 - Storm water management – erosion
 - Groundwater remediation
 - Leachate management
- Scrutiny by DEQ will continue.
- Operational challenges will continue.



Draper Aden Associates
Engineering • Surveying • Environmental Services

Additional Operational Costs

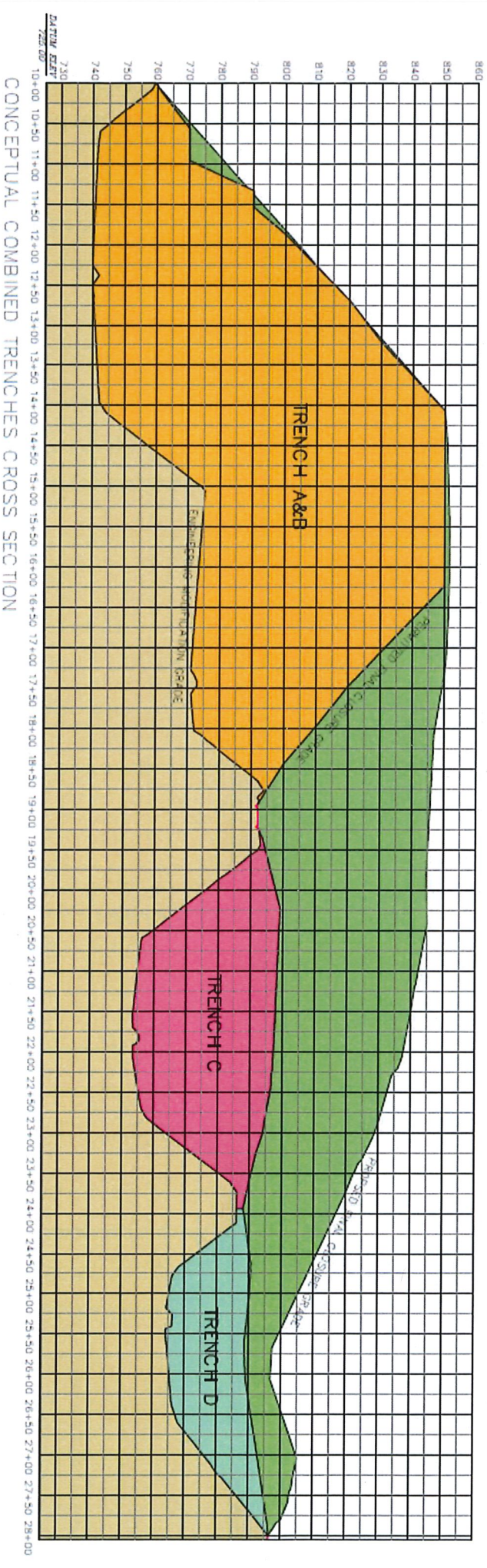
FY 2019 will be first year with full staffing and equipment under continued scrutiny by DEQ

- Potential increases in operational costs include:
 - Overtime to assure operational permit requirements are met
 - Fuel
 - Equipment maintenance and repair
 - Increase in leachate production
 - Groundwater remediation (if needed)



Draper Aden Associates
Engineering • Surveying • Environmental Services

Option 1 Continued Landfill Operations



Graphic is example only and does not represent existing permit conditions.



Draper Aden Associates
Engineering • Surveying • Environmental Services

Option 1

Continued Landfill Operations

- Interim cover or “mothballing landfill”
- Design/construction – cost of liner and cap over \$600,000 per acre (2018 dollars)
- Operations – personnel; equipment; leachate
- Compliance monitoring – groundwater, stormwater, landfill gas
- Closure – costs increase with acreage
- Post Closure Care = 30 years



Draper Aden Associates
Engineering • Surveying • Environmental Services

Advantages Continued Landfill Operations

- County control of operations
- Limited need for long term contracts with third parties
- Responsibility for permit compliance.
- Reaction to natural disasters - flexible
- Waste acceptance - greater (e.g. sludge, large dead farm animals, some industrial wastes.)



Draper Aden Associates
Engineering • Surveying • Environmental Services

Disadvantages Continued Landfill Operations

- Personnel – number, training, certification
- Equipment – number, cost, maintenance
- Working face and access – diversity of haulers; inclement weather
- Litter control – windy conditions



Disadvantages Continued Landfill Operations

- Leachate - flows, hauling, treatment
- Competition and poor economy of scale
- Regulatory compliance – more regulations
- Long-term liability for closure and the 30 year post closure care period



Draper Aden Associates
Engineering • Surveying • Environmental Services

Schedule

OPTION 1 – CELL 2 CONSTRUCTION

- December, 2018 County E&S approval
- February, 2019 Bid project
- April, 2019 Notice to proceed
- October, 2019 Substantial completion
- December, 2019 Certificate to operate



Draper Aden Associates
Engineering • Surveying • Environmental Services

Option 2 Privatize Landfill Operations

- Request for proposals or bids did not have any responses
- County maintains full liability for landfill as permit holder
- Eliminated from further consideration



Option 3 Transfer to Out of County LF



Graphic is example only and does not represent option as presented in report.

Option 3

Transfer to Out of County LF

- Transfer station - 8,000 square feet; cost approximately \$1,656,000; 20 - 25 year life
- Limited personnel and equipment requirements
- Contract(s) for hauling and disposal
- Disposal options considered:
 - Region 2000 Landfill: 12 years life; approx. 40 miles RT; gate rate \$40.25/ton
 - WMX Amelia County facility: 100+ years of life; approx. 150 miles RT; gate rate \$21/ton



Draper Aden Associates
Engineering • Surveying • Environmental Services

Transfer Distances

Distance from Amherst Landfill site to:

- Region 2000 landfill (public): 21 miles
- Proposed Green Ridge (private): 67 miles
- WMX – Amelia County (private): 75 miles
- Lunenburg (private): 82 miles
- SRPSA – Butcher Creek (public): 83 miles
- Shoosmith LF (private): 113 miles
- Brunswick Landfill (private): 114 miles
- Tri-City (private): 114 miles
- WMX – Charles City (private): 136 miles



Advantages Transfer Options

- Loan - Fund the transfer station and the closure of Cell 1
- Reserve fund - Fully fund post closure care for Cell 1 for 30 years and initial transfer station equipment
- Personnel - Better working environment
- Equipment/equipment maintenance
 - Less expensive; better environment



Draper Aden Associates
Engineering • Surveying • Environmental Services

Advantages Transfer Options

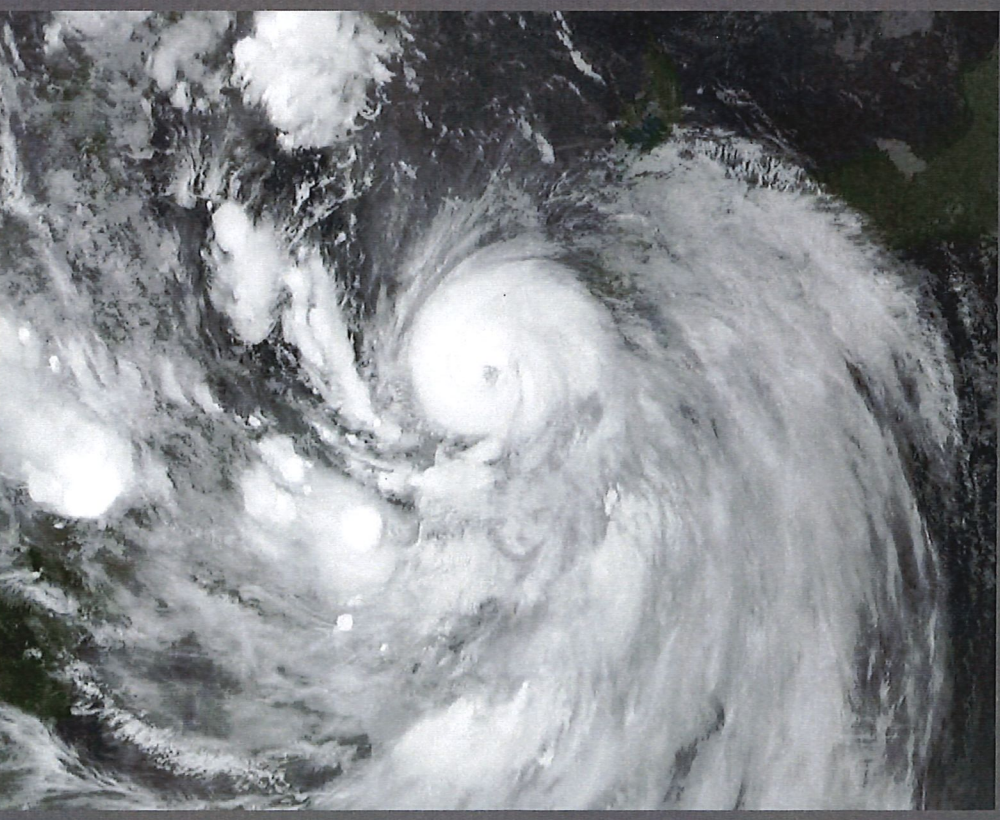
- Access into the facility - Better for haulers
- Litter control - Internal to building
- Leachate - Significant flow reduction (except from Cell 1)
- Recycling – Enhancement
- Economy of scale - Not critical to this option
- Capital investment and long term liability - Less than the landfill



Draper Aden Associates
Engineering • Surveying • Environmental Services

Disadvantages Transfer Options

- Hauling and disposal contracts: Procurement; escalators; lack of control
- Fuel escalators: Variability
- Disposal facilities: Capacity; compliance with VDEQ
- Reaction to natural disasters: May not be as flexible; impacted by contracts



Draper Aden Associates
Engineering • Surveying • Environmental Services

Schedule

OPTION 3 – TRANSFER OPERATIONS

- Maintain landfill operations through FY 2020
- FY 2019 Design facility
- March, 2019 Bid project
- June, 2019 Notice to Proceed
- March, 2020 Substantial Completion
- June, 2020 Final permit and CTO
- FY 2021 Initiate closure activities



Draper Aden Associates
Engineering • Surveying • Environmental Services

Summary

ITEM	TOTAL ESTIMATED COST FY 2019 – FY 2037	COST OF SERVICE (\$/TON)
Option 1 – Landfill Operations	\$45,199,300	\$97
Option 3 – Transfer to Region	\$44,111,100	\$94
Option 3 – Transfer to WMX	\$40,563,700	\$87

A difference in \$10/ton over the length of the planning period represents an annual savings of about \$246,000 per year.



Draper Aden Associates
Engineering • Surveying • Environmental Services