







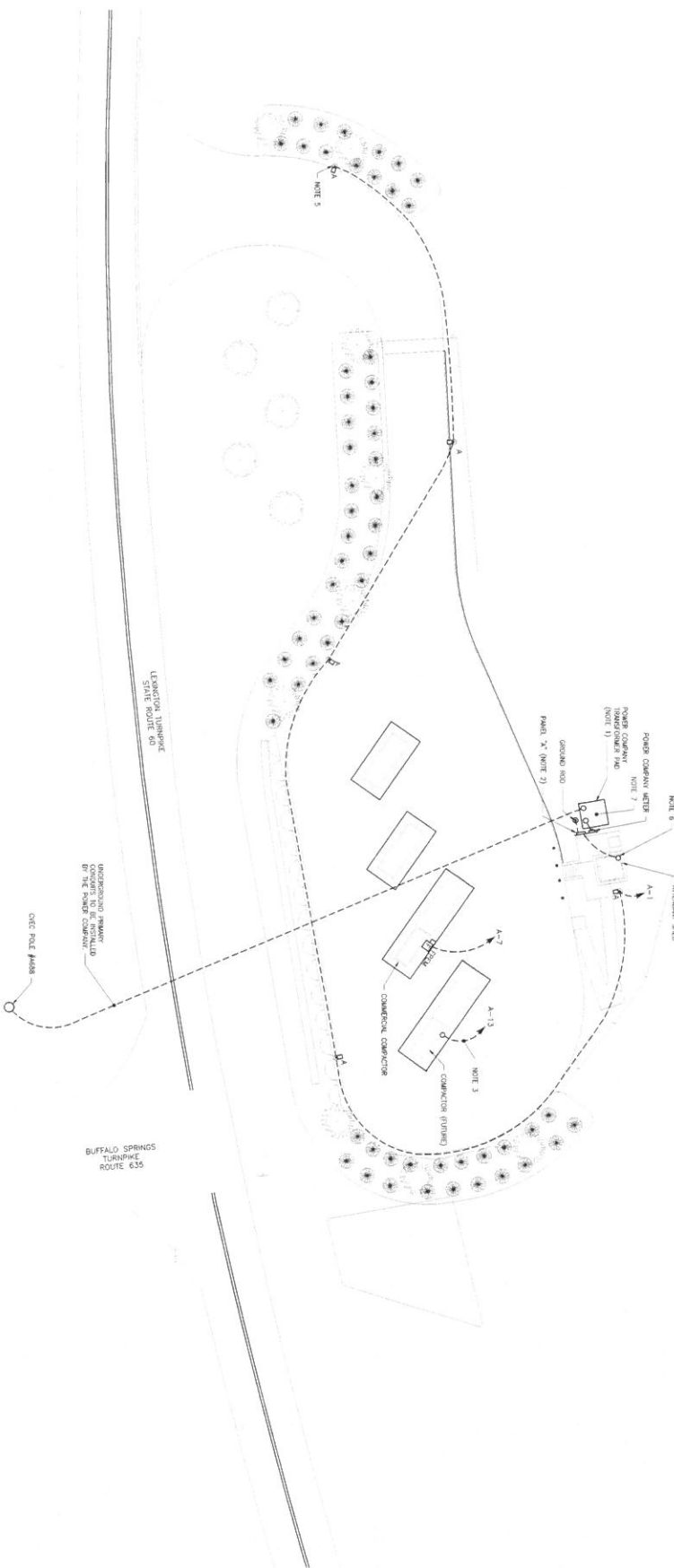
TYPE "A"

LIGHTING FIXTURE SCHEDULE				
TYPE	MANUFACTURER	CATALOG NUMBER	VOLTAGE	WATTAGE
A	LITOMAR	DEMO-PS-40K-TALMACT-148	208	40
SSA	LITOMAR	DS2008-200-TU	-	-
SSA	LITOMAR	SSA-20-42	-	-
DESCRIPTION				
LED POLE MOUNTED AREA LUMINAIRE, FORWARD THROW, TYPE MEDIUM				
10,000 LUMEN				
SEALED AGAINST MOISTURE AND ENVIRONMENTAL CONTAMINANTS, TPC THERMOSET POWDER				
COAT FINISH: ACRYLIC LENSES, FULL CUT OFF, 20'-0" MOUNTING HEIGHT				
20 SQUARE STRAIGHT ALUMINUM POLE, FINISH SELECTION BY OWNER				

\*\* CATALOG NUMBERS ARE NOT COMPLETE. CONSULT WITH MANUFACTURER FOR ADDITIONAL INSTALLATION REQUIREMENTS NOT SPECIFIED.

## SITE POWER & LIGHTING PLAN

SCALE: 1" = 20'



### NOTES (SHEET NO. E2)

1. POWER COMPANY TO INSTALL NEW POWERLINE TRANSFORMER, BENTON FOR THE TRANSFORMER FOR POWER COMPANY SPECIFICATIONS. ENSURE TRANSFORMER IS LOCATED ON PWD SUCH THAT THERE ARE PROPER WORKING CLEARANCES BETWEEN THE TRANSFORMER AND SERVICE ENTRANCE EQUIPMENT.
2. COORDINATE PARKING LOT LOCATION WITH OWNER. SEE "SERVICE SUPPORT", SHEET "E1" FOR WORKING DETAILS.
3. INSTALL CONDUIT AS NOTED ON PANEL "X" SCHEDULE. STUD UP AND CAP CONDUIT IN SLOPE AT THE CONDUIT. OF FUTURE CONNECTION CONNECTION. PULL STRIPS FOR HOT SPOT, WORK IN DETAILS.
4. SEE UNDERGROUND JUNCTION BOX INSTALLATION DETAIL, SHEET "E3".
5. SEE "POLE BASE" SHEET "E1" FOR LIGHT POLE WORKING DETAIL.
6. INSTALL LIGHT POLES AND LUMINAIRES AS NOTED ON SCHEDULE. COORDINATE WITH ATTENDANT SHED. STUD CONDUITS UP AND CAP CONDUIT AT THE CONDUIT. OF FUTURE CONNECTION CONNECTION. PULL STRIPS FOR HOT SPOT, WORK IN DETAILS.
7. FOR CONDUIT TYPE, SIZE AND PULL, SEE ONE LINE DRAWING.



577 025

441 946 100 Fax 441 946 101

## SITE POWER & LIGHTING PLAN FOR DODD'S STORE SOLID WASTE CONVENIENCE CENTER AMHERST COUNTY, VIRGINIA



**Draper Aden Associates**  
Engineering • Surveying • Environmental Services

2206 South Main Street  
Blacksburg, VA 24060  
540-552-0444 Fax 540-552-0291  
www.daa.com

• Richmond, VA  
• Charlottesville, VA  
• Hampton Roads, VA  
• Raleigh, NC  
• Fayetteville, NC  
• Northern Virginia  
• Virginia Beach, VA



SHEET E2 OF 3



LOAD SUMMARY					AVERAGE PHASE APPS (CONNECTED)
CONNECTED KVA					
LIGHTS	RECEPTACLES	HVAC	OTHER	TOTAL	
150	240	200	3400	3950	109.79

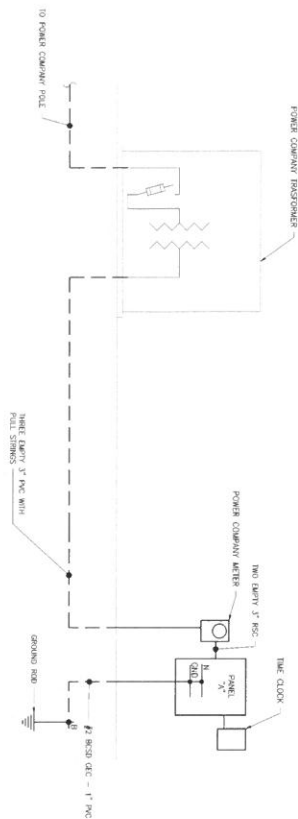
LOAD SUMMARY					AVERAGE PHASE APPS (CONNECTED)
CONNECTED KVA					
LIGHTS	RECEPTACLES	HVAC	OTHER	TOTAL	
150	240	200	3400	3950	109.79

PANEL BOARD CHARACTERISTICS:	
VOLTS:	120/208
PHASES:	3
WIRING:	4
SOLID NEUTRAL	
MAIN BREAKER 200 AMPERES	
MINIMUM SHORT CIRCUIT RATING: 22,000 RMS SYMMARS	

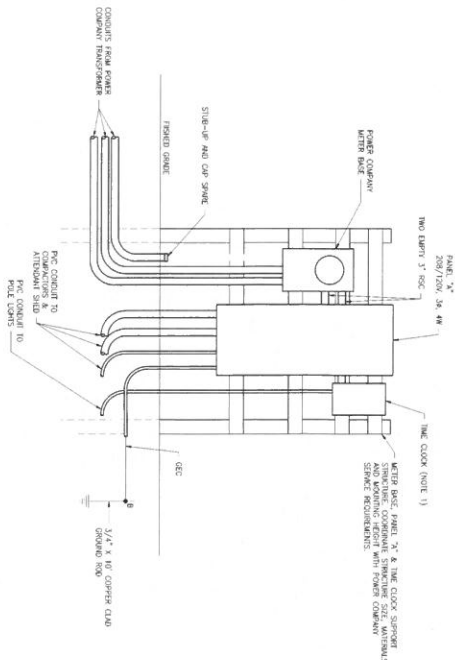
[illegible]

\*USE MANUFACTURER-RECOMMENDED WIRE AND APPROPRIATE WIRE SIZE FOR UNIT. CONDUIT IS OVERSIZED IN CASE LARGER WIRE IS NEEDED.

## SCALE: NOT TO SCALE



## SCALE: NOT TO SCALE



NOIES (SHEET NO. E3

1. PROVIDE A 20-AMPERE, 208 VOLT ASTRONOMICAL TIME CLOCK IN A METALLIC, NEMA 3R, LOCKABLE ENCLOSURE, WIRE TIME CLOCK TO CONTROL EXTERIOR LIGHTS, PROGRAM TIME CLOCK SO THAT LIGHTS ARE SWITCHED ON AND OFF AT OWNER-SPECIFIED DAYS AND TIMES.

SCALE: NOT TO SCALE

