



Route 29 Business Beautification Committee

Route 29 Business Beautification Committee Purpose



The purpose of the Route 29 Business Beautification Committee is to beautify the roadways of Amherst County so as to instill pride and appreciation of the citizenry and the attractiveness of their community. The Committee will work towards promoting the attraction of customers to the 29 Business corridor and will provide citizens an opportunity to take an active role in the appearance of our community.

Route 29 Business Beautification Committee Purpose



The Committee will play an active role in achieving a corridor that is attractive and well maintained. The Committee will work with government agencies, businesses, non-profits and community groups to facilitate an attractive and highly functioning business corridor. The Committee will provide periodic updates to the Planning Commission.

Location #1: Route 163 / River Road (Entrance – Sugar Maple)



Location #1: Route 163 / River Road
(Median – Crape Myrtle)



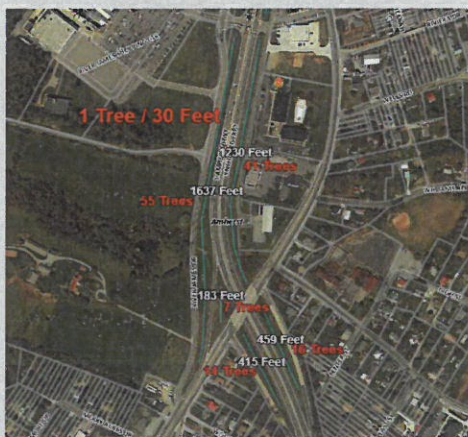
Location #2: 210 Interchange
(South – Red Maple)



Location #2: 210 Interchange (North – Willow Oak)



Location #3: Lowes South (South – Red Maple)



Location #3: Lowes South
(East – Sweet Gum)



Location #3: Lowes South
(West – Crape Myrtle)



Location #4: Lowes North (East – Yoshino Cherry)



Location #4: Lowes North (West – Crape Myrtle)



Location #5: Daniels Place (Sugar Maple)



Route 29/130 & Route 29 and Dillard Road



Route 29/Dillard Road & Route 29 to Phelps Road



Route 210 & Riversedge Park



AEP Pole Locations for Banners

Route 29 Business Beautification Committee





